

EQUIP. TYPE *R390A/WRR* DWP. NO.

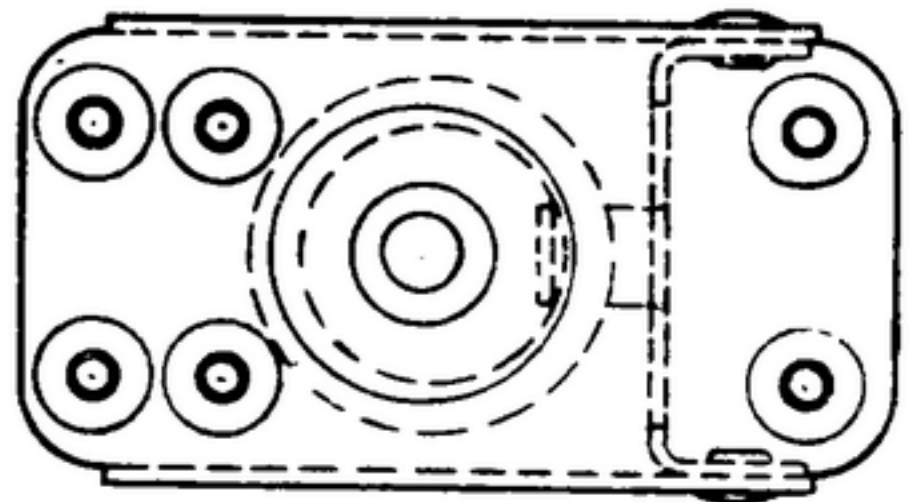
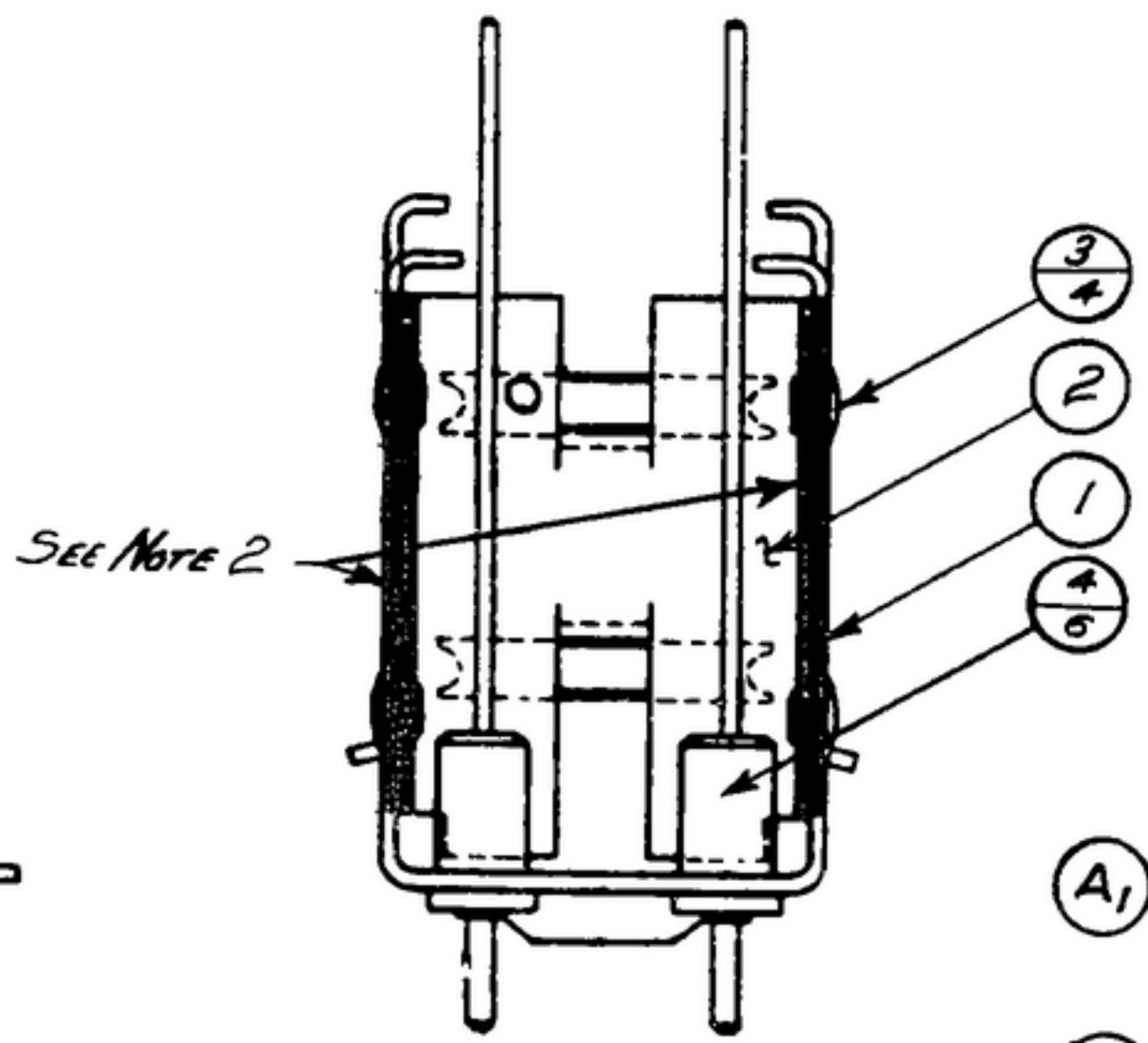
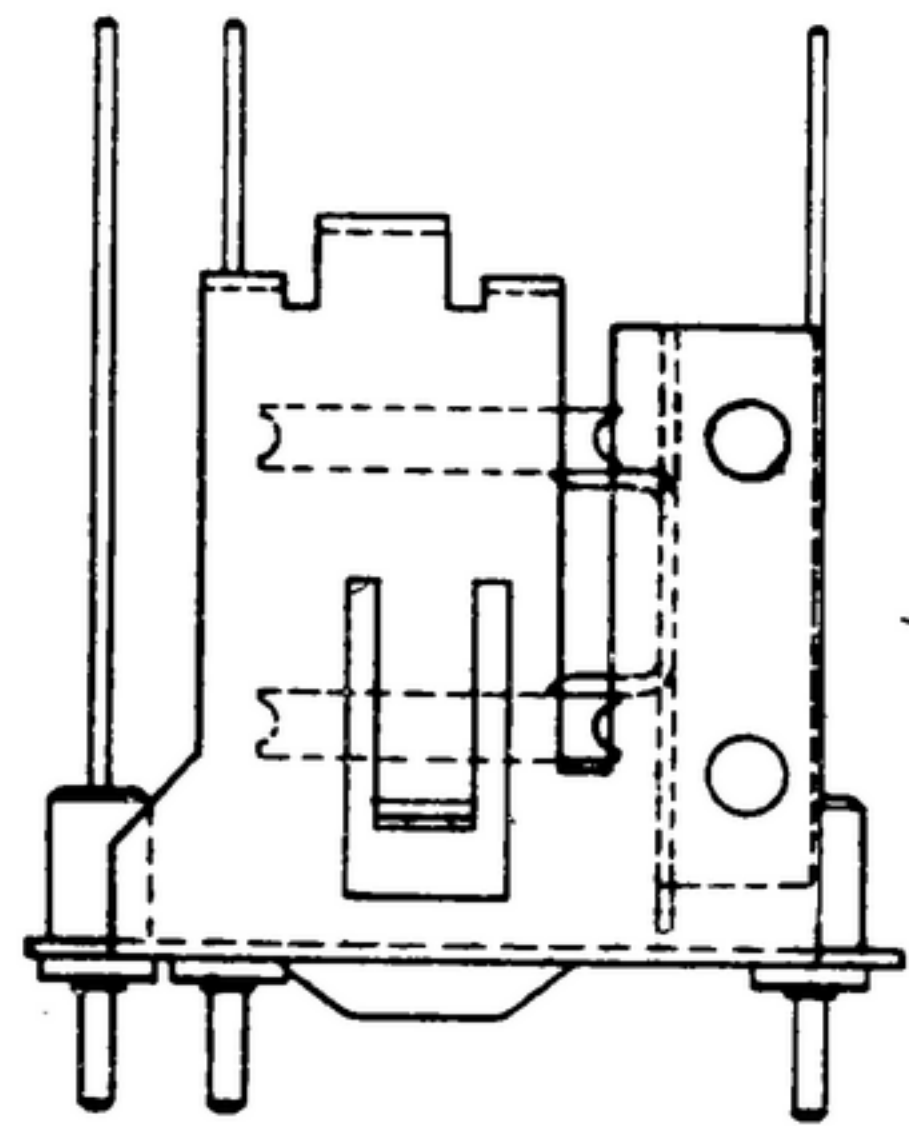
COL. 540 7872 002

NOTICE: WHEN GOVERNMENT DRAWINGS, SPECIFICATIONS, OR OTHER DATA ARE USED FOR ANY PURPOSE OTHER THAN IN CONNECTION WITH A SPECIFICALLY RELATED GOVERNMENT PROCUREMENT OPERATION, THE UNITED STATES GOVERNMENT THEREBY INCURS NO RESPONSIBILITY FOR ANY SOLIDATION, FURNISHED, OR IN ANY WAY SUPPLIES THE GOVERNMENT MAY HAVE FORMULATED, PROVIDED, OR IN ANY WAY SUPPLIES THE SAID DRAWINGS, SPECIFICATIONS, OR OTHER DATA IS NOT TO BE REGARDED BY IMPLICATION OR OTHERWISE AS IN ANY MANNER LIMITING THE HOLDER OR ANY OTHER PERSON OR ORGANIZATION, OR CONVEYING ANY RIGHTS OR PERMISSIONS TO REPRODUCE, USE, OR SELL ANY PATENTED INVENTION THAT MAY IN ANY WAY BE RELATED THERETO.

THIS DOCUMENT HAS BEEN PURCHASED BY THE GOVERNMENT AND MAY BE REPRODUCED AND USED IN CONNECTION WITH ANY GOVERNMENT PROCUREMENT OR MAINTENANCE OPERATION.

* FOR INFORMATION ONLY. CONTRACTOR MAY AT HIS OPTION DEVIATE FROM THESE PROCESS DETAILS.

REVISIONS			
SYM	DESCRIPTION	DATE	APPROVAL
A₃	A₁-DELETED NOTE 4 (VARNISH). A₂ ITEM 5 WAS VARNISH; A₃-REPLACED COLLINS PART NO'S WITH SWE PART NO'S.	17 NOV 59	42428-PC-59-A1-51 REV'D. PME
B	(1)-ADDED NOTES * 6 & 7 (2)-ADDED PT. NO. 05S111216-65 & PT. NO. SM-B-249067-1 WAS SM-B-283266-1. & ADDED NOTES NO'S. 6,7.	9 DEC 60	42428-PC-59 REV'D. PME



- NOTES:
1. ASSEMBLE LINK (2) TO FRAME (1) AS SHOWN & ROLL.
 2. SOLDER EDGE OF FRAME (1) TO LINK (2) AS SHOWN USING COMP SN 60 WARP SOLDER PER SPEC. QQ-S-571 PER SPEC. MIL-S-6872.
 3. PRESS TERMINALS (4) INTO FRAME (1) AS SHOWN.
 5. IN ALL SPLIT BALLOONS TOP FIGURE IS MATERIAL LIST ITEM INDICATOR & BOTTOM FIGURE IS QUANTITY.
 6. AS SUPPLIED BY NATIONAL RIVET AND MFG. CO. WAUPUN, WIS. PT. NO. AB-1-3-ST-MAT'L TYPE C1006, C1010 OR C1015 STEEL PER FED SPEC. QQ-W-409 OR EQUAL.
 7. FINISH M 262 PER SPEC. MIL-F-14072.

SWE. PART NO.	ITEM	REQD	PART NO.	DESCRIPTION	MATL	MATL SPEC	NOTES
A₂ 05130317-7	5	As Reqd		SOLDER SOFT	SN60 WARP3	QQ-S-571	2
B₂ 05S111216-65	3		4	SM-B-249270	TERMINAL-INSULATED		
	2		4	SM-B-249067-1	RIVET-TUBULAR		6,7
	1		1	SM-G-249080	LINK ASSY		
	1		1	SM-G-249077	FRAME-ANT COIL		

SWE. PART NO.	ITEM	REQD	PART NO.	DESCRIPTION	MATL	MATL SPEC	NOTES
LIST OF MATERIAL							
COLLINS PART NO. 558 0418 002							

COLLINS NO.	QTY	NEXT ASSY	USED ON
558 0438 004	1	SM-D-249087	SC-DL-249775

DRAWN *A. B. B.* CHECKED *Rlm* APPROVED _____

UNLESS OTHERWISE SPECIFIED:
 DECIMAL DIMENSIONS INCLUDING HOLE SIZES MAY VARY ±.008
 FRACTIONAL DIMENSIONS INCLUDING HOLE SIZES MAY VARY ±1/64
 MACHINED ANGLES MAY VARY ±.1°
 SHARDED ANGLES MAY VARY ±.25°
 BROKEN ANGLES MAY VARY ±.1°
 ECCENTRICITY BETWEEN ANY DIAMETERS ON THE SAME CENTERLINE SHALL NOT EXCEED .010 TOTAL INDICATOR READING.
 ALL DIMENSIONS ARE FINISH DIMENSIONS INCLUDING APPLIED FINISH AND ARE GIVEN IN INCHES.

COLLINS-RADIO-CO.
 CEDAR RAPIDS, IOWA
 14214-PH-51-93

SIGNAL CORPS
 REVIEWED *PME*
 APPROVED *HLV*
PME

DATE 16 DEC 55 SCALE 2/1

DEPARTMENT OF THE ARMY
 SIGNAL CORPS ENGINEERING
 LABORATORIES
 FORT MONMOUTH NEW JERSEY

SM-B-249067